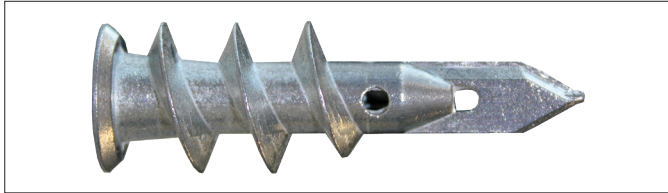


PLASTERMATE™ ANCHOR



27.11 PRODUCT DATA

- Head Type:
- Phillips Drive
- Material Coating:
- Zinc (Pictured)
 - Nylon
 - Gold Zinc

27.12 PRODUCT DESCRIPTION

The Macsim Plastermate™ is a Threaded Zinc Alloy/ or White Nylon Plug which self drills and taps into plasterboard and accepts 8 to 10 Gauge Self Tapping Screws. The plug will split on insertion of the screw to end of the plug, giving superior holding power.

27.14 APPLICATIONS

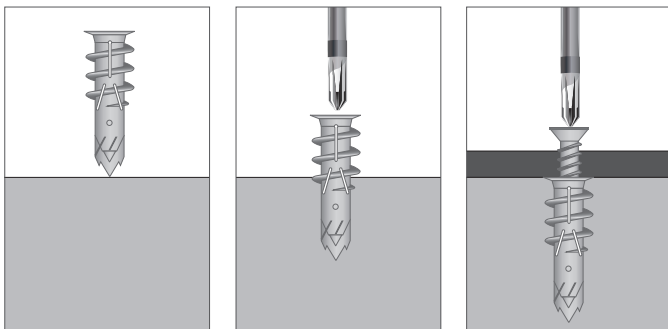
- Plasterboard

27.13 INSTALLATION METHOD

1. A Plastermate™ can be simply screwed into the plasterboard with a hand PH2 Screw Driver. For easier insertion, push a No. 2 Phillips Screw Driver through Plasterboard in the position required for the fixing. Insert the Plastermate™ and screw in.
2. Use either an 8G or 10G Chipboard or Self Tapping Screw of a length long enough to insert 25mm into the plug and through the component to be fixed. Do not over tighten.

27.15 ADVANTAGES

- Easy Installation
- Superior Holding Power



Code	Screw Size (Gauge)	Hole Diameter (mm)	Wall Thickness (mm)	Min. Cavity Depth (mm)	Screw Length (mm)
52WZ	8	Self Drilling	10+	25	25
52WN	8 or 10	Self Drilling	10+	25	25

27.16 MATERIAL SPECIFICATIONS

CODE	Size (Gauge)	Body Specification	Temperature Rating (°C)
52WZ	8	Zinc Alloy	200
52WN	8 - 10	Nylon	60

27.17 TECHNICAL SPECIFICATIONS

CODE	Description	Advisory SWL Tension Plasterboard 10mm N	Advisory SWL Tension Plasterboard 16mm N	Advisory SWL Tension Plywood 10mm N	Advisory SWL Shear Plasterboard 16mm N
52WZ	Zinc	120	150	200	300
52WN	Nylon	120	150	200	300