

Compilation date: 10/10/2016

Revision date: 18/09/2020

DESCRIPTION

Macsim® Ultrabond is a two component chemical anchoring injection system. A formulation derived from epoxy acrylate resin with high bond strength, developed principally to anchor threaded rods into concrete. Used widely for medium to high loads in both horizontal and vertical applications.

FEATURES

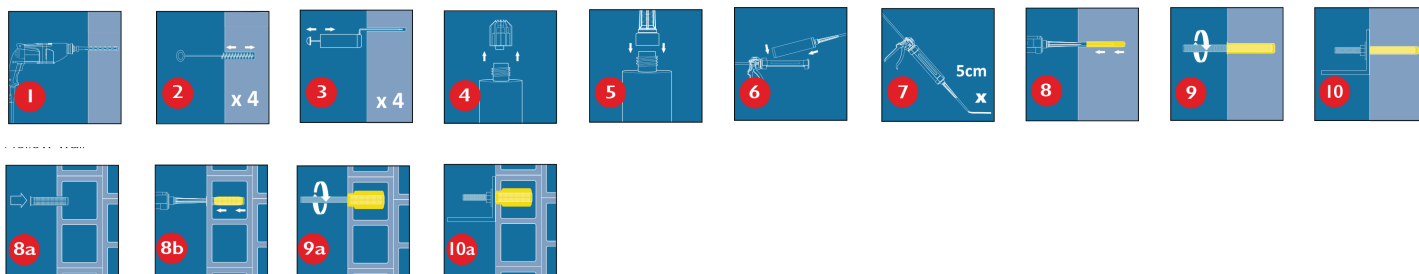
- Suitable for high loads within standard annulus and embedments.
- Fast working times for early loading in time sensitive applications.
- No styrene allows for use indoors and in enclosed spaces.
- Use in damp & wet environments and fixing holes.
- Good durability formulation, resistance to chemicals.
- Used for studs and relatively small diameter rebar.
- 10:1 resin available in a variety of cartridge types.
- Fixings in concrete, wood, or other high strength materials.

RECOMMENDED USE

Developed to anchor threaded rods into concrete, and for masonry and hollow wall installations. Used widely for medium loads in both horizontal and vertical applications.

APPLICATION INSTRUCTIONS

Solid substrates



APPROVALS/ CERTIFICATIONS/ TESTING

- ETA -19/0102 of 2019/04/05
- ETA EAD 330499-00-0601 M8-M24 Threaded Rods 8-24mm Rebar Option 7.
- ETA EAD 330087-00-0601 8-24mm Rebar Post-Installed + Fire Test
- ETA EAD 330076-00-0804 M6-M12 Hollow Wall / Masonry Installations.
- CE Certified 1404-CPR-999 - ZAG, Slovenia.
- WRAS Approved for use with Potable drinking Approval number - 1810566.
- LEED tested 2009 EQ c4.1 SCAQMD rule 1168 (2005.)
- VOC A+ Rating (Volatile Organic Content)

CE 1404 Chemfix Products Ltd 2018	CE 1404 Chemfix Products Ltd 2018	CE 1404 Chemfix Products Ltd 2018
DoP: www.chemfix.co.uk/dop/easf Chemfix EASF TOP ETA-18/0000 EAD 330499-00-0601 M8-M24 8mm - 24mm Option 7 Uncracked 1404-CPR-9999	DoP: www.chemfix.co.uk/dop/easf Chemfix EASF TOP ETA-18/0000 EAD 330087-00-0601 8mm - 24mm + Fire Post Installed Rebar 1404-CPR-9999	DoP: www.chemfix.co.uk/dop/easf Chemfix EASF TOP ETA-18/0000 EAD 330076-00-0604 M6 - M12 Masonry 1404-CPR-9999



Compilation date: 10/10/2016

Revision date: 18/09/2020

Colour	Grey
Density	1.56 kg/l
Compressive Strength	45 N/mm ² (EN ISO 604)

WORKING & HARDENING TIMES

Base Material Temperature	-10°C	-5°C	5°C	15°C	25°C	35°C
Gel Working Time (minutes)	50	40	20	9	5	3
Curing Time Dry Concrete (Mins.)	240	180	90	60	30	20
Curing Time Wet Concrete (Mins.)	x 2	x 2	x 2	x 2	x 2	x 2

TYPICAL TENSILE PERFORMANCE - Standard Embedment Depth

Concrete, C20/25, 5.8 Grade Studding					
Size	Recommended Load		Spacing (mm)	Size (mm)	Setting Depth (mm)
	Tension (Nrec)	Shear (Vrec)			
M8	9.07	5.14	160	10	80
M10	14.36	8.57	200	12	90
M12	20.86	12.00	240	14	110
M16	26.65	22.29	320	18	125
M20	41.54	34.86	400	24	170
M24	61.59	50.29	480	28	210
M30	78.77	81.43	560	35	280

STORAGE & SHELF LIFE

This product should be stored between +5°C & +25°C. Avoid Direct Sunlight. The Shelf life of the product is 18 months from the manufacture date.

HEALTH & SAFETY

First Aid: SWALLOWED: If conscious, give half a litre of water to drink immediately. Do not induce vomiting. Consult a doctor. SKIN: Wash immediately with plenty of soap and water. Remove all contaminated clothes and footwear immediately unless stuck to skin. Consult a doctor. EYES: Bathe the eye with running water for 15 minutes. Consult a doctor. INHALED: Move to fresh air in case of accidental inhalation of vapours. Consult a doctor.

Contact a doctor or poisons information centre (Phone Australia 13 11 26; Phone New Zealand 0800 764 766)

Safety: Keep out of reach of children. Read label before use. Use only outdoors or in a well-ventilated area. For further health and safety information, consult the latest safety data sheet.

PACKAGING

Available in 300ml & 410ml cartridge

Product Details: 71UB300 (300ml); 71UB410 (410ml)

DISCLAIMER

The information in this Technical Data Sheet (TDS) is based on our present knowledge to the date of the publication. However, this shall not constitute a guarantee for any specific product features and shall not establish a legally valid contractual relationship. It is only a guide for safe handling, use, storage, transporting and disposal of the product.

Head Office: Macsim® Fastenings Pty Ltd
 10 Wonderland Drive, Eastern Creek NSW 2766 Australia
 ABN: 30 000 056 119
 Phone: (02) 9881 2400 | Fax: (02) 9881 2444
 TOLL FREE: 1800 022 019

Macsim Australia owns all copyright in these product instructions. All rights reserved. For more information go to www.macsim.com.au